

测试报告

No. CANEC1102057702

日期: 2011年06月03日 第1页,共4页

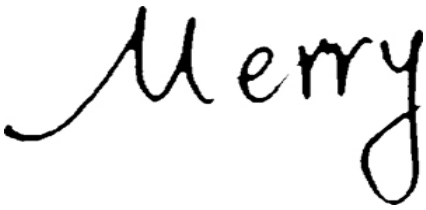
台华纸业(东莞)有限公司
中国广东省东莞市塘厦镇平山188工业区

以下测试之样品是由申请者所提供及确认:

铜钉线

SGS工作编号 : 13156221 - SZ
SGS内部编号 : 12.2
样品接收日期 : 2011年05月30日
测试周期 : 2011年05月30日 - 2011年06月03日
测试要求 : 根据客户要求测试
测试方法 : 请参见下一页
测试结果 : 请参见下一页
结论 : 基于所送样品进行的测试, 测试结果与欧盟RoHS指令2002/95/EC以及后续修正指令的要求 **相符**。

通标标准技术服务有限公司
授权签名



Merry Lv 吕爱凤
批准签署人

This document is issued by the Company subject to its General Conditions of Service printed overleaf, available on request or accessible at http://www.sgs.com/terms_and_conditions.htm and, for electronic format documents, subject to Terms and Conditions for Electronic Documents at www.sgs.com/terms_e-document.htm. Attention is drawn to the limitation of liability, indemnification and jurisdiction issues defined therein. Any holder of this document is advised that information contained hereon reflects the Company's findings at the time of its preparation only and within the limits of Client's instructions, if any. The Company's sole responsibility is to its Client and this document does not exonerate parties to a transaction from exercising all their rights and obligations under the transaction documents. This document cannot be reproduced except in full, without prior written approval of the Company. Any unauthorized alteration, forgery or falsification of the content or appearance of this document is unlawful and offenders may be prosecuted to the fullest extent of the law. Unless otherwise stated, the results shown in this test report refer only to the sample(s) tested.

测试报告

No. CANEC1102057702

日期: 2011年06月03日 第2页,共4页

测试结果:

样品1 ID : CAN11-020577.001
样品1描述 : 铜色金属线

RoHS 指令 2002/95/EC

测试项目	单位	测试方法 (参考)	测试结果	MDL	限值
镉 (Cd)	mg/kg	IEC 62321:2008, ICP-OES	N.D.	2	100
铅 (Pb)	mg/kg	IEC 62321:2008, ICP-OES	N.D.	2	1000
汞 (Hg)	mg/kg	IEC 62321:2008, ICP-OES	N.D.	2	1000
沸水萃取法测六价铬 (CrVI)	-	IEC 62321:2008, UV-Vis	Negative	◇	#

注释:

1. mg/kg = ppm
2. N.D. = 未检出 (< MDL)
3. MDL = 方法检测限
4. ◇ = 点测试:

Negative = 未检测到六价铬, Positive = 检测到;

(如果点测试结果为Negative或不能确认, 测试样品需进一步由沸水萃取法进行测试。)

沸水萃取法:

Negative = 未检测到六价铬

Positive = 检测到六价铬; 每50cm²表面积的被测试样品的沸水萃取液中六价铬的浓度等于或大于0.02mg/kg。

由于未获知样品的存储条件和生产日期, 样品的六价铬测试结果仅能代表测试时样品含六价铬的状态。

5. # = Positive = 阳性
Negative = 阴性
6. "-" = 未规定

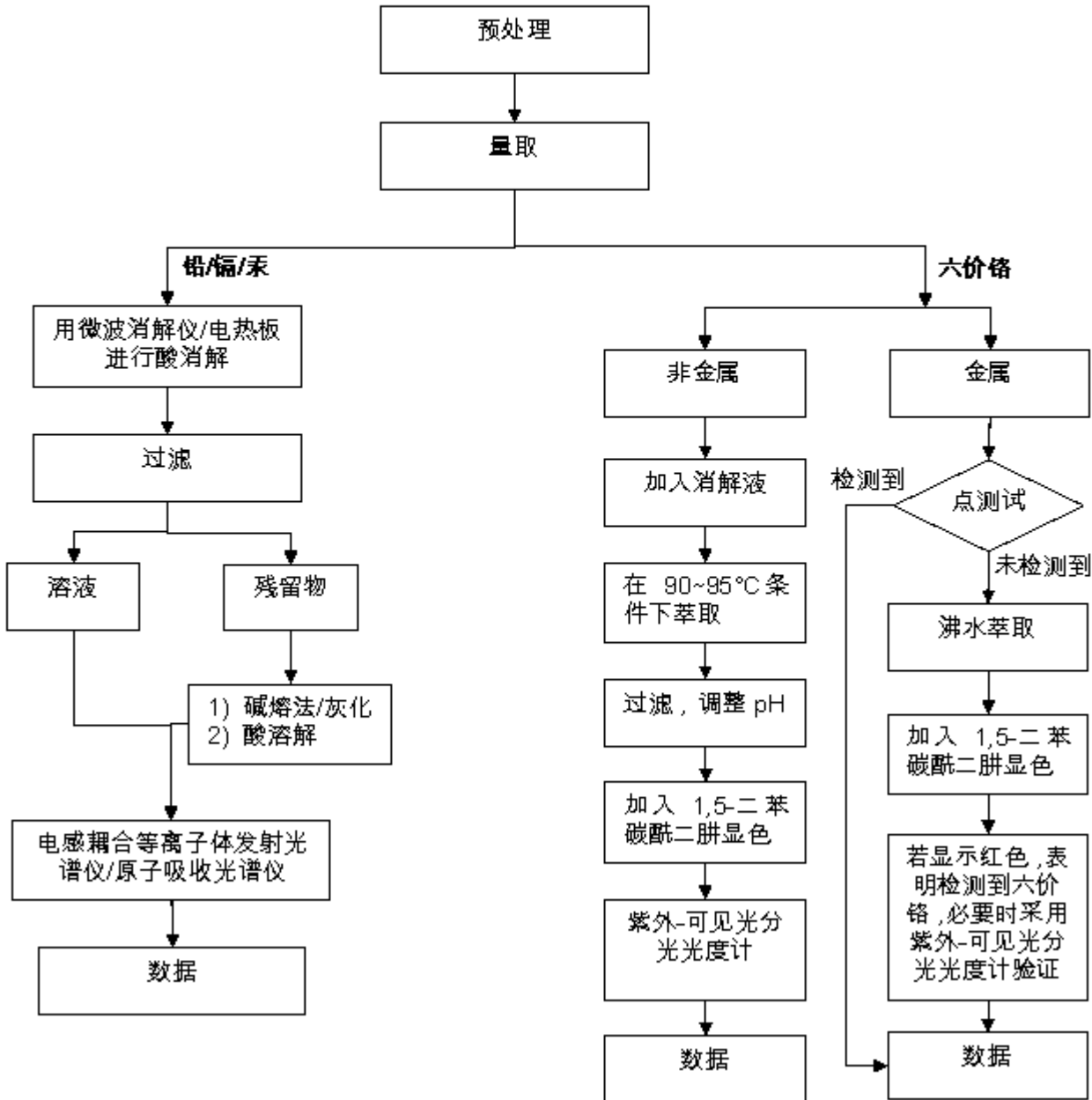
备注: 本测试报告内容是参照报告编号为CANEC1102057701 的中文译本, 中英文版本如有歧异, 概以英文版为准。

This document is issued by the Company subject to its General Conditions of Service printed overleaf, available on request or accessible at http://www.sgs.com/terms_and_conditions.htm and, for electronic format documents, subject to Terms and Conditions for Electronic Documents at www.sgs.com/terms_e-document.htm. Attention is drawn to the limitation of liability, indemnification and jurisdiction issues defined therein. Any holder of this document is advised that information contained hereon reflects the Company's findings at the time of its preparation only and within the limits of Client's instructions, if any. The Company's sole responsibility is to its Client and this document does not exonerate parties to a transaction from exercising all their rights and obligations under the transaction documents. This document cannot be reproduced except in full, without prior written approval of the Company. Any unauthorized alteration, forgery or falsification of the content or appearance of this document is unlawful and offenders may be prosecuted to the fullest extent of the law. Unless otherwise stated, the results shown in this test report refer only to the sample(s) tested.

附件

RoHS 测试流程图

- 1) 分析人员: 汪丹 / 詹达琦
- 2) 项目负责人: 余奕东
- 3) 样品按照下述流程被完全消解 (六价铬测试除外)。



This document is issued by the Company subject to its General Conditions of Service printed overleaf, available on request or accessible at http://www.sgs.com/terms_and_conditions.htm and, for electronic format documents, subject to Terms and Conditions for Electronic Documents at www.sgs.com/terms_e-document.htm. Attention is drawn to the limitation of liability, indemnification and jurisdiction issues defined therein. Any holder of this document is advised that information contained hereon reflects the Company's findings at the time of its preparation only, and within the limits of Client's instructions, if any. The Company's sole responsibility is to its Client and this document does not exonerate parties to a transaction from exercising all their rights and obligations under the transaction documents. This document cannot be reproduced except in full, without prior written approval of the Company. Any unauthorized alteration, forgery or falsification of the content or appearance of this document is unlawful and offenders may be prosecuted to the fullest extent of the law. Unless otherwise stated, the results shown in this test report refer only to the sample(s) tested.

