

测试报告

No. CANEC1102057708

日期: 2011年06月03日 第1页,共6页

台华纸业(东莞)有限公司
中国广东省东莞市塘厦镇平山188工业区

以下测试之样品是由申请者所提供及确认:
蓝色水性油墨

SGS工作编号 : 13156221 - SZ
SGS内部编号 : 12.12
样品接收日期 : 2011年05月30日
测试周期 : 2011年05月30日 - 2011年06月03日

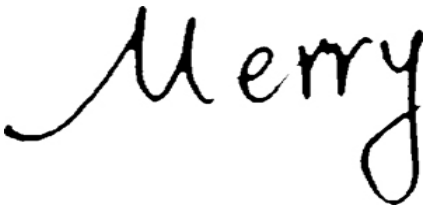
测试要求 : 根据客户要求测试

测试方法 : 请参见下一页

测试结果 : 请参见下一页

结论 : A:基于所送样品进行的测试, 测试结果与欧盟RoHS指令2002/95/EC以及后续修正指令的要求 **相符**。

通标标准技术服务有限公司
授权签名



Merry Lv吕爱凤
批准签署人

This document is issued by the Company subject to its General Conditions of Service printed overleaf, available on request or accessible at http://www.sgs.com/terms_and_conditions.htm and, for electronic format documents, subject to Terms and Conditions for Electronic Documents at www.sgs.com/terms_e-document.htm. Attention is drawn to the limitation of liability, indemnification and jurisdiction issues defined therein. Any holder of this document is advised that information contained hereon reflects the Company's findings at the time of its preparation only and within the limits of Client's instructions, if any. The Company's sole responsibility is to its Client and this document does not exonerate parties to a transaction from exercising all their rights and obligations under the transaction documents. This document cannot be reproduced except in full, without prior written approval of the Company. Any unauthorized alteration, forgery or falsification of the content or appearance of this document is unlawful and offenders may be prosecuted to the fullest extent of the law. Unless otherwise stated, the results shown in this test report refer only to the sample(s) tested.

测试报告

No. CANEC1102057708

日期: 2011年06月03日 第2页,共6页

测试结果:

样品1 ID : CAN11-020577.006
 样品1描述 : 蓝色油墨

A:RoHS 指令 2002/95/EC

测试项目	单位	测试方法 (参考)	测试结果	MDL	限值
镉 (Cd)	mg/kg	IEC 62321:2008, ICP-OES	N.D.	2	100
铅 (Pb)	mg/kg	IEC 62321:2008, ICP-OES	N.D.	2	1000
汞 (Hg)	mg/kg	IEC 62321:2008, ICP-OES	N.D.	2	1000
碱性溶液萃取测六价铬(Cr VI)	mg/kg	IEC 62321:2008, UV-Vis	N.D.	2	1000
多溴联苯(PBBs)之和	mg/kg	-	N.D.	-	1000
单溴联苯	mg/kg	IEC 62321:2008, GC-MS	N.D.	5	
二溴联苯	mg/kg	IEC 62321:2008, GC-MS	N.D.	5	
三溴联苯	mg/kg	IEC 62321:2008, GC-MS	N.D.	5	
四溴联苯	mg/kg	IEC 62321:2008, GC-MS	N.D.	5	
五溴联苯	mg/kg	IEC 62321:2008, GC-MS	N.D.	5	
六溴联苯	mg/kg	IEC 62321:2008, GC-MS	N.D.	5	
七溴联苯	mg/kg	IEC 62321:2008, GC-MS	N.D.	5	
八溴联苯	mg/kg	IEC 62321:2008, GC-MS	N.D.	5	
九溴联苯	mg/kg	IEC 62321:2008, GC-MS	N.D.	5	
十溴联苯	mg/kg	IEC 62321:2008, GC-MS	N.D.	5	
多溴二苯醚(PBDEs)之和	mg/kg	-	N.D.	-	1000
单溴二苯醚	mg/kg	IEC 62321:2008, GC-MS	N.D.	5	
二溴二苯醚	mg/kg	IEC 62321:2008, GC-MS	N.D.	5	
三溴二苯醚	mg/kg	IEC 62321:2008, GC-MS	N.D.	5	
四溴二苯醚	mg/kg	IEC 62321:2008, GC-MS	N.D.	5	
五溴二苯醚	mg/kg	IEC 62321:2008, GC-MS	N.D.	5	
六溴二苯醚	mg/kg	IEC 62321:2008, GC-MS	N.D.	5	
七溴二苯醚	mg/kg	IEC 62321:2008, GC-MS	N.D.	5	
八溴二苯醚	mg/kg	IEC 62321:2008, GC-MS	N.D.	5	
九溴二苯醚	mg/kg	IEC 62321:2008, GC-MS	N.D.	5	
十溴二苯醚	mg/kg	IEC 62321:2008, GC-MS	N.D.	5	

注释:

1. mg/kg = ppm
2. N.D. = 未检出 (< MDL)
3. MDL = 方法检测限
4. "-" = 未规定
5. 多溴二苯醚 = 多溴联苯醚

This document is issued by the Company subject to its General Conditions of Service printed overleaf, available on request or accessible at http://www.sgs.com/terms_and_conditions.htm and, for electronic format documents, subject to Terms and Conditions for Electronic Documents at www.sgs.com/terms_e-document.htm. Attention is drawn to the limitation of liability, indemnification and jurisdiction issues defined therein. Any holder of this document is advised that information contained hereon reflects the Company's findings at the time of its preparation only and within the limits of Client's instructions, if any. The Company's sole responsibility is to its Client and this document does not exonerate parties to a transaction from exercising all their rights and obligations under the transaction documents. This document cannot be reproduced except in full, without prior written approval of the Company. Any unauthorized alteration, forgery or falsification of the content or appearance of this document is unlawful and offenders may be prosecuted to the fullest extent of the law. Unless otherwise stated the results shown in this test report refer only to the sample(s) tested.

测试报告

No. CANEC1102057708

日期: 2011年06月03日 第3页,共6页

B:卤素

测试项目	单位	测试方法 (参考)	测试结果	MDL
氟 (F)	mg/kg	BS EN 14582:2007, IC	N.D.	50
氯 (Cl)	mg/kg	BS EN 14582:2007, IC	266	50
溴 (Br)	mg/kg	BS EN 14582:2007, IC	N.D.	50
碘 (I)	mg/kg	BS EN 14582:2007, IC	N.D.	50

注释:

1. mg/kg = ppm
2. N.D. = 未检出 (< MDL)
3. MDL = 方法检测限

备注1: 所示结果为湿样品总重量中的含量。

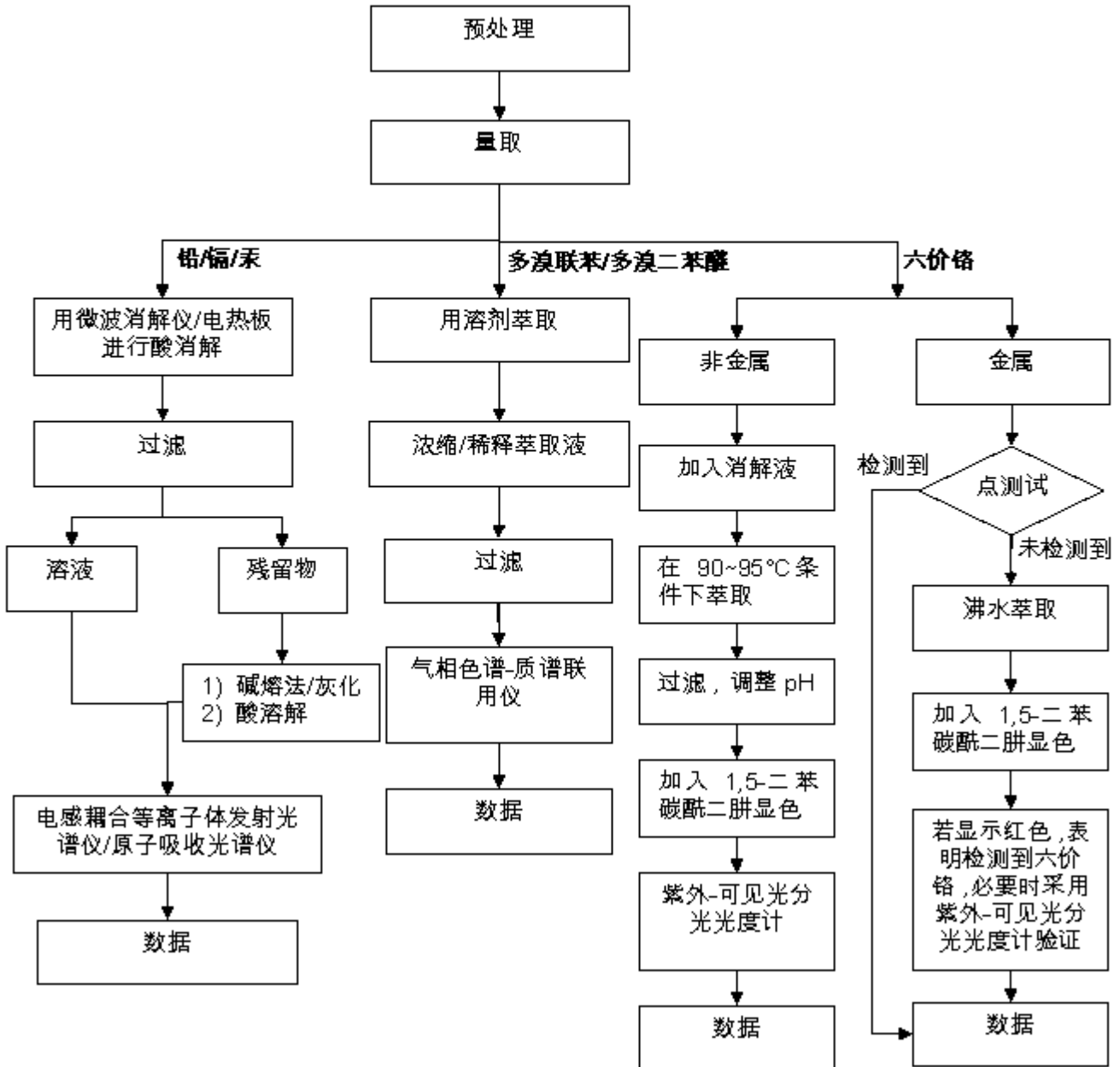
备注2: 本测试报告内容是参照报告编号为CANEC1102057707 的中文译本, 中英文版本如有歧异, 概以英文版为准。

This document is issued by the Company subject to its General Conditions of Service printed overleaf, available on request or accessible at http://www.sgs.com/terms_and_conditions.htm and, for electronic format documents, subject to Terms and Conditions for Electronic Documents at www.sgs.com/terms_e-document.htm. Attention is drawn to the limitation of liability, indemnification and jurisdiction issues defined therein. Any holder of this document is advised that information contained hereon reflects the Company's findings at the time of its preparation only and within the limits of Client's instructions, if any. The Company's sole responsibility is to its Client and this document does not exonerate parties to a transaction from exercising all their rights and obligations under the transaction documents. This document cannot be reproduced except in full, without prior written approval of the Company. Any unauthorized alteration, forgery or falsification of the content or appearance of this document is unlawful and offenders may be prosecuted to the fullest extent of the law. Unless otherwise stated, the results shown in this test report refer only to the sample(s) tested.

附件

RoHS 测试流程图

- 1) 分析人员: 汪丹 / 余晓璐 / 詹达琦
- 2) 项目负责人: 余奕东 / 杨伟兴
- 3) 样品按照下述流程被完全消解 (六价铬和多溴联苯/多溴二苯醚测试除外)

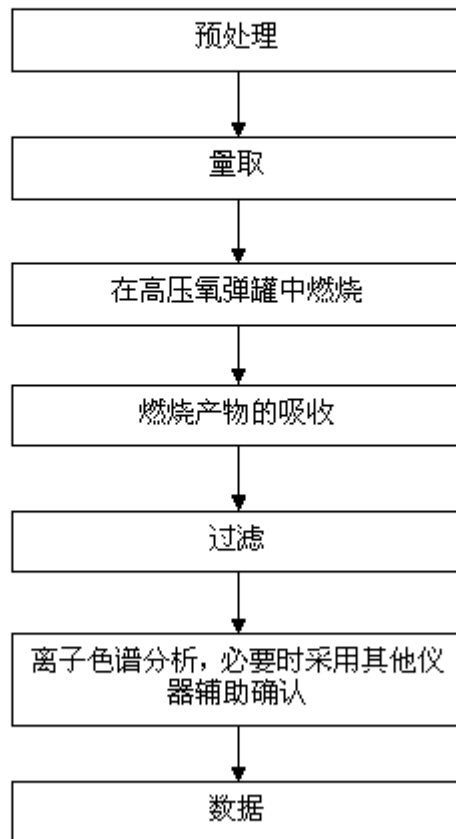


This document is issued by the Company subject to its General Conditions of Service printed overleaf, available on request or accessible at http://www.sgs.com/terms_and_conditions.htm and, for electronic format documents, subject to Terms and Conditions for Electronic Documents at www.sgs.com/terms_e-document.htm. Attention is drawn to the limitation of liability, indemnification and jurisdiction issues defined therein. Any holder of this document is advised that information contained hereon reflects the Company's findings at the time of its preparation only, and within the limits of Client's instructions, if any. The Company's sole responsibility is to its Client and this document does not exonerate parties to a transaction from exercising all their rights and obligations under the transaction documents. This document cannot be reproduced except in full, without prior written approval of the Company. Any unauthorized alteration, forgery or falsification of the content or appearance of this document is unlawful and offenders may be prosecuted to the fullest extent of the law. Unless otherwise stated, the results shown in this test report refer only to the sample(s) tested.

附件

Halogen 测试流程图

- 1) 分析人员: 王亮
- 2) 项目负责人: 宋燕青



This document is issued by the Company subject to its General Conditions of Service printed overleaf, available on request or accessible at http://www.sgs.com/terms_and_conditions.htm and, for electronic format documents, subject to Terms and Conditions for Electronic Documents at www.sgs.com/terms_e-document.htm. Attention is drawn to the limitation of liability, indemnification and jurisdiction issues defined therein. Any holder of this document is advised that information contained hereon reflects the Company's findings at the time of its preparation only and within the limits of Client's instructions, if any. The Company's sole responsibility is to its Client and this document does not exonerate parties to a transaction from exercising all their rights and obligations under the transaction documents. This document cannot be reproduced except in full, without prior written approval of the Company. Any unauthorized alteration, forgery or falsification of the content or appearance of this document is unlawful and offenders may be prosecuted to the fullest extent of the law. Unless otherwise stated, the results shown in this test report refer only to the sample(s) tested.

测试报告

No. CANEC1102057708

日期: 2011年06月03日 第6页,共6页

样品照片:



此照片仅限于随SGS正本报告使用
*** 报告完 ***

This document is issued by the Company subject to its General Conditions of Service printed overleaf, available on request or accessible at http://www.sgs.com/terms_and_conditions.htm and, for electronic format documents, subject to Terms and Conditions for Electronic Documents at www.sgs.com/terms_e-document.htm. Attention is drawn to the limitation of liability, indemnification and jurisdiction issues defined therein. Any holder of this document is advised that information contained hereon reflects the Company's findings at the time of its preparation only and within the limits of Client's instructions, if any. The Company's sole responsibility is to its Client and this document does not exonerate parties to a transaction from exercising all their rights and obligations under the transaction documents. This document cannot be reproduced except in full, without prior written approval of the Company. Any unauthorized alteration, forgery or falsification of the content or appearance of this document is unlawful and offenders may be prosecuted to the fullest extent of the law. Unless otherwise stated, the results shown in this test report refer only to the sample(s) tested.